



Photo: HR2810



Photo: HR2810

### Accessories

#### Quick change drill chuck (Drill chuck set)

For Model: HR2811FT, HR2810T  
Part No. 194079-2



#### Dust cup

Bit dia: 6-14.5mm Part No. 421342-3  
Bit dia: 12-16mm Part No. 421664-1



#### Dust cup set

Part No. 194580-7



#### Dust extractor attachment

Part No. 193472-7



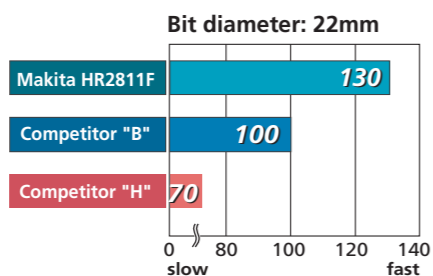
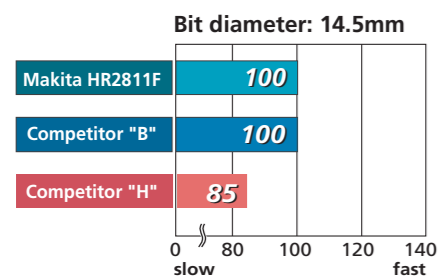
### Comparison of Drilling Efficiency

Note: It may differ under some conditions.

#### Drilling

Note: Numbers in the charts below are relative values when the capacities of competitor "B" are indexed at 100.

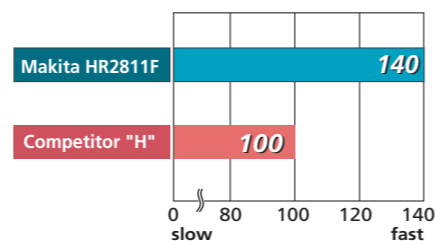
Test conditions: Drilled in concrete with compressive strength of 40N/mm<sup>2</sup>.



#### Chipping

Note: Numbers in the charts below are relative values when the capacities of competitor "H" are indexed at 100.

Test conditions: Chipped concrete with compressive strength of 40N/mm<sup>2</sup>, and measured the amount of concrete removed.



	Combination Hammers HR2811F/FT, HR2810/T		Rotary Hammer HR2800	
	HR2811F	HR2810T	HR2810	HR2800
Double Insulation	325	325	325	325
Variable Speed	Yes	Yes	Yes	Yes
Reversing	Yes	Yes	Yes	Yes
Torque Limiter	Yes	Yes	Yes	Yes
Dust Collecting	Yes	Yes	Yes	Yes
SDS-Plus Shank	Yes	Yes	Yes	Yes
Carrying Case	Yes	Yes	Yes	Yes
Built-in Job Light (HR2811F, HR2811FT only)	Yes	Yes	No	No
Continuous rating Input	800W	800W	800W	800W
Capacity				
Concrete : (with diamond core bit)	80mm (3-1/8")	80mm (3-1/8")	80mm (3-1/8")	80mm (3-1/8")
Concrete : (with T.C.T. bit)	28mm (1-1/8")	28mm (1-1/8")	28mm (1-1/8")	28mm (1-1/8")
Steel :	13mm (1/2")	13mm (1/2")	13mm (1/2")	13mm (1/2")
Wood :	32mm (1-1/4")	32mm (1-1/4")	32mm (1-1/4")	32mm (1-1/4")
Impacts per minute (ipm)	0 - 4,500	0 - 4,500	0 - 4,500	0 - 4,500
No load speed (rpm)	0 - 1,100	0 - 1,100	0 - 1,100	0 - 1,100
Dimensions	320 x 89 x 225mm (12-5/8" x 3-1/2" x 8-7/8")	345 x 89 x 225mm (13-5/8" x 3-1/2" x 8-7/8")	314 x 89 x 225mm (12-3/8" x 3-1/2" x 8-7/8")	339 x 89 x 225mm (13-3/8" x 3-1/2" x 8-7/8")
Net weight	3.2kg (7.1lbs)	3.4kg (7.5lbs)	3.2kg (7.1lbs)	3.2kg (7.1lbs)
Power supply cord	4.0m (13.1ft)	4.0m (13.1ft)	4.0m (13.1ft)	4.0m (13.1ft)
Standard Equipment	Quick Change Drill Chuck (HR2811FT, HR2810T only), Depth Gauge, Side Grip (Tool does not come with bit.)			

Items of standard equipment and specifications may differ by country or area.

## Makita Corporation

3-11-8 Sumiyoshi-cho, Anjo, Aichi, 446-8502 Japan

PRINTED IN JAPAN Z23326-2 2007-08



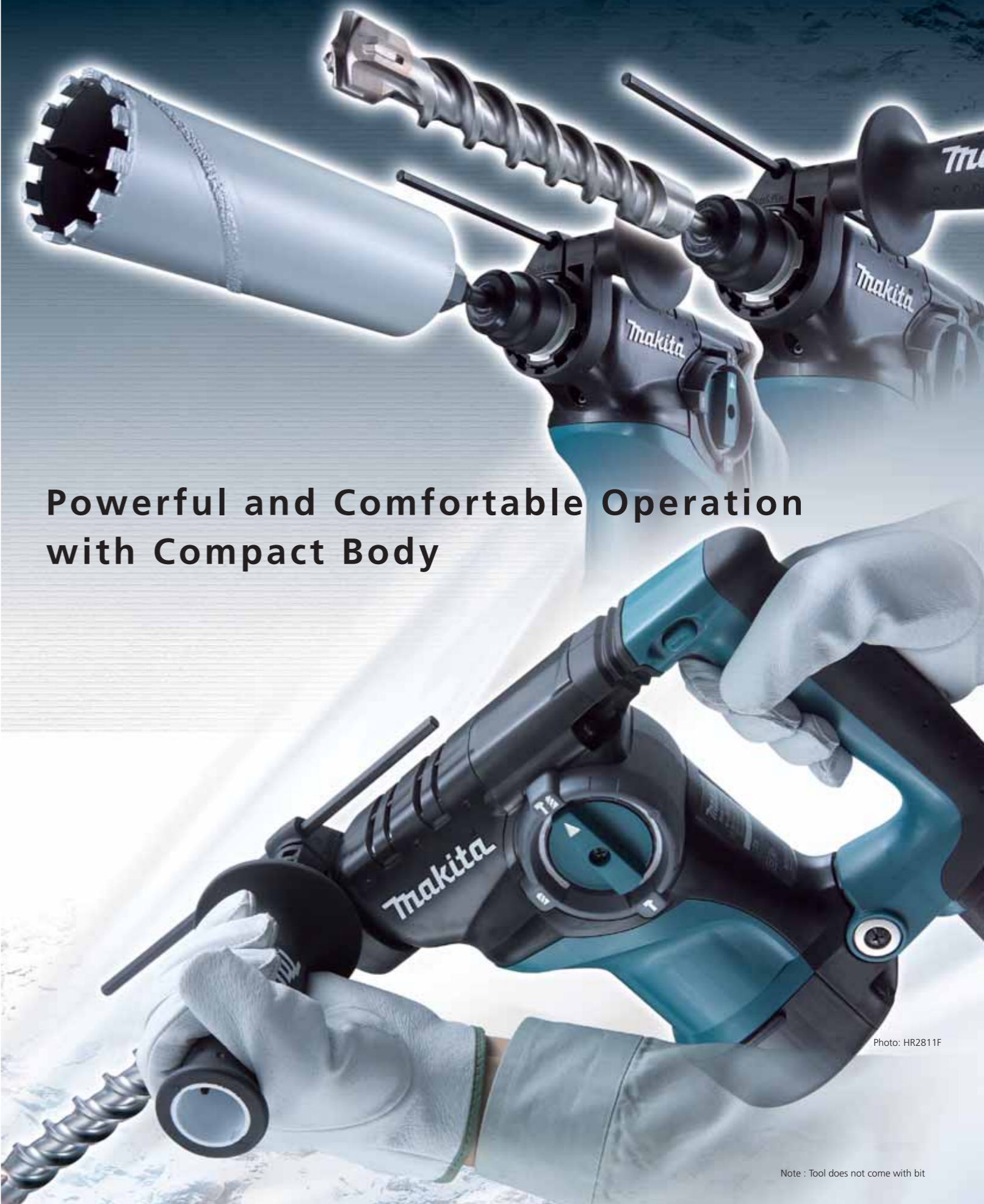
## Combination Hammers

HR2811F/FT, HR2810/T 28mm (1-1/8")

Satisfy Professional's Needs



Rotary Hammer HR2800 28mm (1-1/8")



# Powerful and Comfortable Operation with Compact Body

Photo: HR2811F

Note : Tool does not come with bit

# Powerful and Comfortable Operation

With Low vibration and Highest-in-class efficiency in drilling and chipping

## Compact Body for Better Handling

L-shaped Motor Housing shortens each distance between Rear/ Side Handles and Bit Tip

▶ More compact than 24mm Rotary Hammers



▶ Lighter weight and more compact than 30mm Rotary Hammers



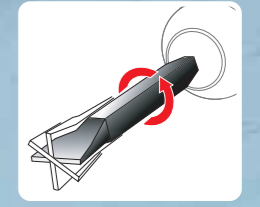
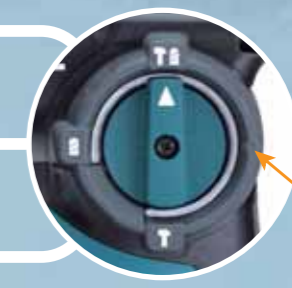
Powerful  
**800**  
W

## 3 MODE

**Hammering with Rotation**

**Rotation**

**Hammering**



Chisel rotates full 360 degrees with 40 different locking positions.



**Vibration Absorbing Grip**  
Spring is mounted to absorb vibration.  
(HR2811F / HR2811FT only)



**LED Job Light**  
(HR2811F / HR2811FT only)



**Quick Change Chuck**  
SDS-plus chuck can be replaced to keyless drill chuck in a second.  
(HR2811FT / HR2810T only)



**HR2811F**  
**HR2811FT**

Vibration Absorbing Grip LED Job Light  
Vibration Absorbing Grip LED Job Light  
Quick Change Chuck

Photo: HR2811F



**HR2810**  
**HR2810T**

Quick Change Chuck

Photo: HR2810

## 2 MODE

**Hammering with Rotation**

**Rotation**



**HR2800**

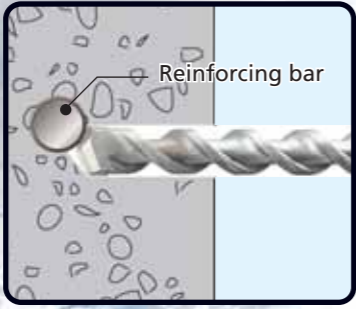
Tool does not come with bit.

Photo: HR2811F

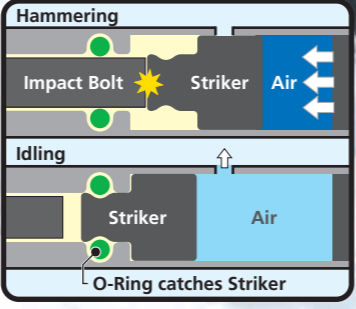
**Reversing Switch**  
Operable by one hand

**Rubberized Grip**  
Provides more control and comfort.

**Bumper**  
Protects the surface of workpiece and machine.



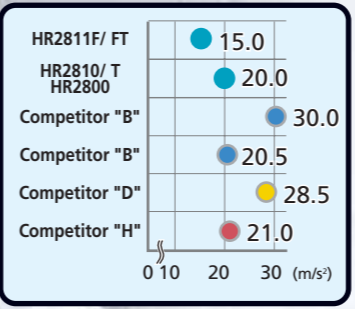
**Torque Limiter**  
Stops bit rotation when hitting reinforcement.



**No Hammering when Idling**  
Ensures machine's long life.



**One-Touch Sliding Chuck**  
for easy SDS-plus bit changes



**Comparison of Vibration**